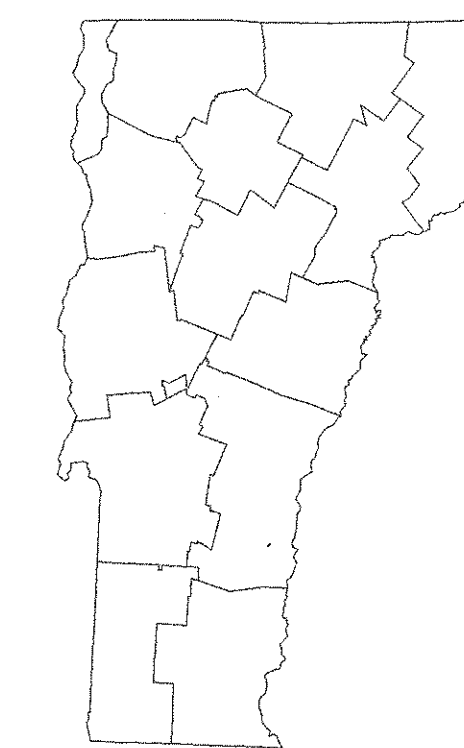
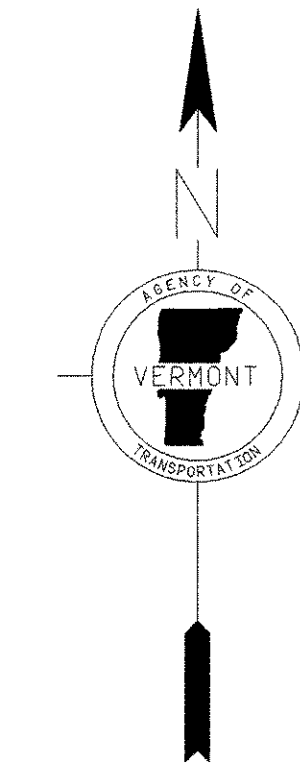
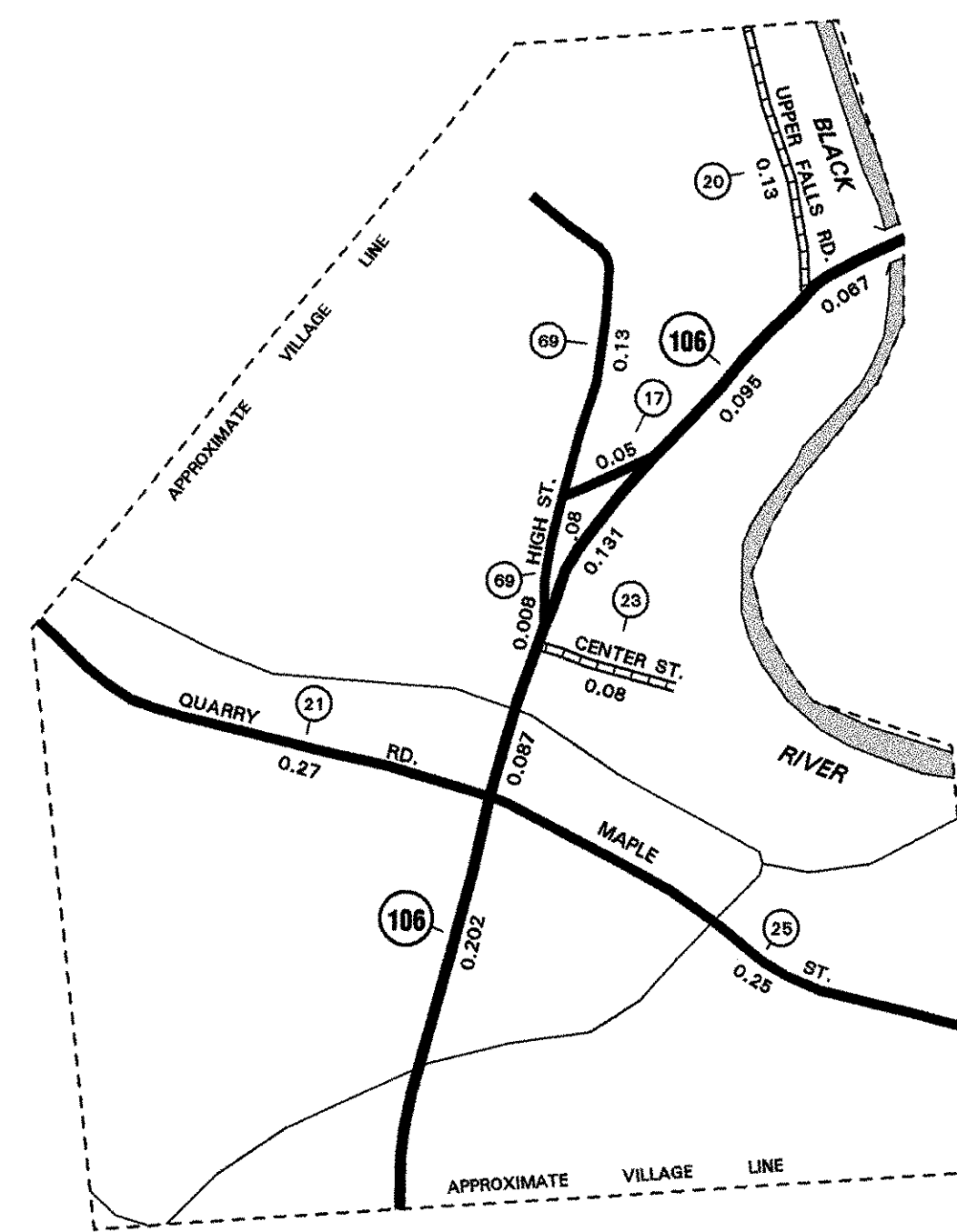


TOWN HWY NO.	LENGTH IN MILES	
	CLASS 3	CLASS 4
17	0.050	
20	0.130	
21	0.270	
23	0.080	
25	0.250	
69	0.210	
<b>TOTAL</b>	<b>0.990</b>	<b>0.000</b>

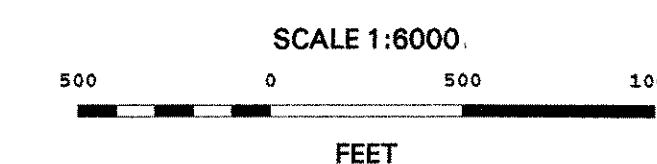
MILEAGE SUMMARY

CLASS 1 TOWN HIGHWAYS:		
TOTAL, CLASS 1 TOWN HWYS.	0.000	
CLASS 2 TOWN HIGHWAYS:		
TOTAL, CLASS 2 TOWN HWYS.	0.000	
CLASS 3 TOWN HIGHWAYS:		
TOTAL, CLASS 3 TOWN HWYS.	0.990	
TOTAL, TOWN HWYS.	0.990	
STATE HIGHWAYS:		
INTERSTATE RAMP	0.000	
TOTAL, INTERSTATE HWYS.	0.000	
STATE HWY. 105	0.590	
TOTAL, NON-INTERSTATE HWYS.	0.590	
TOTAL, STATE HWYS.	0.590	
TOTAL, TRAVELLED HWYS., FEB. 10, 2003 (EXCLUDES CLASS 4 MILEAGE)	1.580	



# VERMONT GENERAL HIGHWAY MAP VILLAGE OF PERKINSVILLE

PREPARED BY THE  
VERMONT AGENCY OF TRANSPORTATION  
PROGRAM DEVELOPMENT DIVISION  
IN COOPERATION WITH  
U.S. DEPARTMENT OF TRANSPORTATION  
FEDERAL HIGHWAY ADMINISTRATION



- HIGHWAYS**
- ==== INTERSTATE
  - ==== STATE HIGHWAY SYSTEM
  - ==== TOWN HIGHWAY SYSTEM
  - - - - U - IMPASSABLE OR UNTRAVELED
  - - - - D - DISCONTINUED
  - - - - LT - LEGAL TRAIL
  - - - - FT - FOOT TRAIL

- INTERSTATE ROUTE
- U.S. NUMBERED ROUTE
- STATE NUMBERED ROUTE
- INTERCHANGE NUMBER
- CLASS 1 TOWN HIGHWAY
- CLASS 2 TOWN HIGHWAY
- CLASS 3 TOWN HIGHWAY
- CLASS 4 TOWN HIGHWAY
- NATIONAL FOREST ROAD
- STATE FOREST HIGHWAY

- ROAD SURFACE TYPES**
- ==== STATE PAVED
  - ==== OTHER PAVED
  - ==== STATE GRAVEL
  - ==== OTHER GRAVEL
  - ==== GRADED AND DRAINED
  - ==== UNIMPROVED/PRIMITIVE

- NATURAL FEATURES**
- ~ SINGLE LINE STREAM
  - OPEN WATER
  - SWAMP

- POLITICAL SUBDIVISIONS**
- STATE BOUNDARY
  - COUNTY BOUNDARY
  - TOWN BOUNDARY
  - CITY BOUNDARY
  - VILLAGE BOUNDARY
  - URBAN COMPACT BOUNDARY

- OTHER TRANSPORTATION**
- RAILROAD
  - AIRPORT TERMINAL

- MISCELLANEOUS**
- DAM

DISCLAIMER:  
Highway and bridge data by Vermont Agency of Transportation, Division of Program Development. All other data from Vermont Center for Geographic Information.