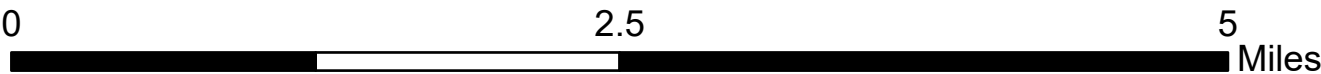
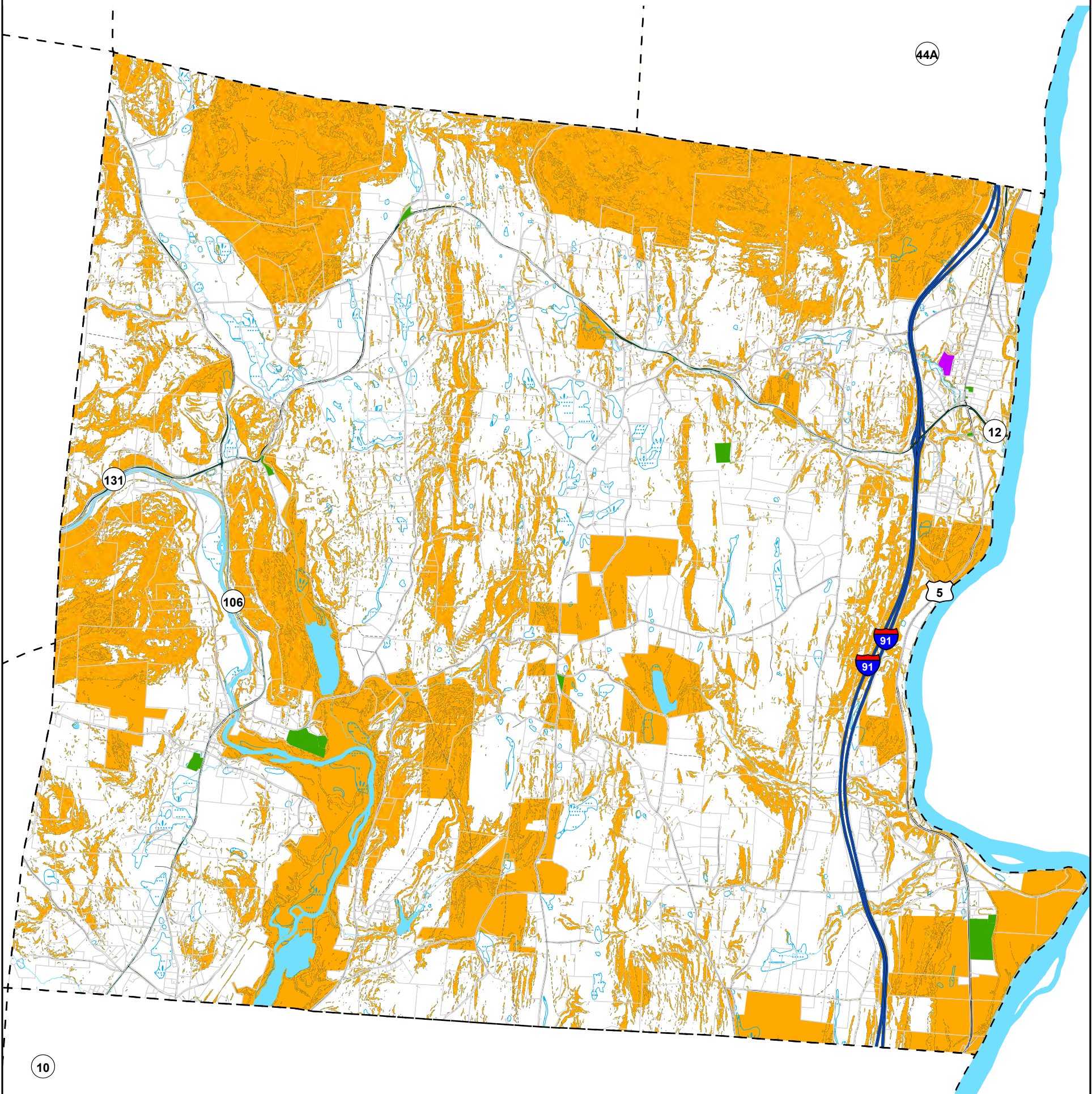


Draft Development Constraints Map
Town of Weathersfield



- | | | | |
|----------------------|----------------------------|---|--|
| Town Owned Land | US Highway | Class 4 Town Highway | Development Prohibited or Conserved Land |
| School District Land | State Highway | Forest Road, Legal Trail, or Private Road | Lakes and Ponds |
| Parcels | Class 1 Town Highway | Wetlands | River or Stream |
| Interstate | Class 2 and 3 Town Highway | | |

Map for planning purposes only.
Not for regulatory interpretation.

DRAFT
September 26, 2022

VT State Plane, Meters, NAD 83
Data depicted on this map are for planning purposes only and are based on best available information from VCGI and other sources. Some of the data – for example, town boundaries and parcels – do not line up.
Data sources: Road centerline (VTrans 2022), Parcels (VCGI 2021), Elevations from Digital Elevation Model (DEM) VCGI 2016), Slopes (VCGI 2021), Conserved Public Lands (VCGI and Partner Organizations 2021), Town Boundary (Vermont from VCGI 2016 and New Hampshire from USGS/ Granit 2009)
Development Prohibited layer includes:
- Elevations 1500ft or above
- Slopes greater than 25%
- Conserved land



PO Box 320, Ascutney, VT 05030
www.marcvt.org