

WEATHERSFIELD CONSERVATION COMMISSION

Meeting Agenda

Thursday, February 22, 2024, 7:00 PM

Location: Weathersfield Proctor Library, 5181 US Route 5, Ascutney, VT

1. Agenda review
2. Approval of minutes: July 27, 2023 & January 25, 2024
3. Project Review – Assign volunteers
4. Waterway Naming Project – Overview
5. Town Forest Kiosk – Overview
6. Conservation Commissioner Packet – Discussion – Changes or additions to content.
7. Town Forest Management Plan – Recap.
8. Town Forest Interpretive Trail – Discussion – ARPA status update from Brandon.
Should this be pursued with grant funding? Should this be dropped down to future projects pending better access?
9. Town Walks - Overview
10. Budget/Grants update
11. Other/new business (Ellen’s email from Susan Dewitt Wilder, Rural Design)
12. Adjourn

Next meeting:

March 28, 2024, 7:00 PM

AGENDA ITEM

2

Weathersfield Conservation Commission

Thursday, July 27, 2023

Weathersfield Center Meeting House

Present: Ryan Gumbart, Heather Shand, Cheryl Cox, Howard Beach, Ellen Clattenburg, and Marina Garland who is applying to join the Commission

Minutes: June 29, 2023. Heather moved that the minutes of June 29, 2023 be accepted; Cheryl seconded the motion and all voted to approve the motion.

Town Forest:

Kiosk - Ellen has given Peter Torney at Bibens a list of the materials we asked for and he has confirmed Bibens will donate these. Ellen will pick these up and also contact Matt Keniston about helping us build the kiosk this fall (or sooner if he is around).

Interpretive trail - The selectmen will prioritize maintenance projects when deciding how the ARPA funds will be used. Since our submission is a new one and will create more maintenance, it will not be a priority. Ryan will send Brandon Gulnick our estimate again as it didn't appear on the list of ARPA hopefuls.

Hannah Dallas still working on the forest plan

The cabin removal was completed on July 22. Ryan, Howard, Jeff, Cheryl, Bruce and Ellen were there.

Waterway naming project

Marie Caduto spoke with Ryan to explain her original request. She has a list of streams with conflicting names and no names. August Murray has offered to help the Conservation Commission. We decided that we must address this project differently and so will go back to the beginning. We will identify Marie Caduto's request and then approach the Select Board to ask for approval to start work on her request.

We should identify the streams Marie originally asked about. WCC members should look at the list Jeff came up with and send the names we find to Ryan.

Nature Walk

As our original Nature walk has to be postponed because of the mess left by the impoundment of waters in the Flood Control Area, we are going to offer a walk from another Weathersfield park and ask if Parks and Rec would like to co-sponsor it.

August 5, 8:30 am, Salmond Covered Bridge on Sherman Brook. There will be some history, birds, and plant identification. We'll head up Ascutney Notch Road for a short way. Ryan will check with Ray about parking and with Parks and Rec about co-sponsoring. Cheryl will send out the press releases.

New Member packet

Ryan prepared this, Cheryl made some changes

We added a number of past projects to give new members a better idea of what types of projects the conservation commission has been involved in

It is ready to share

Weathersfield Conservation Commission

Thursday, July 27, 2023

Weathersfield Center Meeting House

Ryan will remind Brandon that both Marina Garland and Anna Vogel would like to join the Commission

Land use update

Aug. 7 the use tables and bylaws will go to the Selectboard - this will give a clean slate

The Town Plan update is due by 2025 (there will be many things for us to be involved in)

The plan is to start with a map of Weathersfield – a conceptual map - breaking the town into protection areas and development areas. With this conceptual map as the basis for discussion, it should be clearer how to address the rest of the plan

New Business

We should update the brochure describing farm products available locally - As part of the Town Plan, there's a piece that notes that the town will support local agriculture. And Vermont hopes to grow 30% of our food needs by 2030.

Heather moved that the meeting be adjourned, Ellen seconded. This motion was approved at 8:10 pm.

Respectfully submitted, Ellen Clattenburg, secretary

Next meeting: August 24 at 7 pm, Weathersfield Center Meeting House or Memorial Grove (depending on weather and mosquitoes)

BLANK

Weathersfield Conservation Commission

7 pm

Thursday, January 25, 2024

1879 Schoolhouse - Perkinsville

Present: Ryan Gumbart, Chair, Howard Beach, Cheryl Cox, Bruce Cox, Marina Garland Heather Shand, Anna Vogel, Ellen Clattenburg

Guests: Hannah Dallas, Southern Windsor County Forester, and Kathy Urffer, Connecticut River Conservancy River Steward

Ryan opened the meeting at 7:05 pm with a welcome to guest presenters. He briefly reviewed the agenda and turned the meeting over to Hannah Dallas to give an update on the Town Forest Management Plan.

Town Forest

Hannah has been reading deeds, conducting a natural communities inventory, and showed a map of the 310 acre forest with her overlay of the natural communities. Her ideas and observations briefly summarized:

- There is a huge amount of deer pressure (in some areas, the deer are even going after beech saplings)
- The Town Forest is part of a huge wildlife corridor, but from a forestry and ecological perspective, it's pretty vulnerable because there is not a lot of regeneration – a lot of old trees, not much young forest coming along
- The parcel was once farmed and pastured, evidence of this is still visible and the forest is still recovering. (The naturalist who reviewed the parcel after it became town property said “Do nothing”, Hannah feels that with no young trees, there's not a good future for this forest. She felt some management would be necessary.)
- Access to some parts of the forest is quite limited, but other areas have good access. A few areas have high species diversity compared to other areas which are primarily hemlock or pine. In particular areas 5, 6, and 8 have good (or at least possible) access. Stand 6 is the site that the ATA would like to build lots of trails.
- Area 7 is 92 percent white pine which is declining (dying) and invasives are coming in. This is an area to work on. Hannah noted that there is a deer exclusion fence (20x20') ready to install as soon as we have a site for it (this might be the area).

Hannah asked the commission for our opinion on what should go in the management plan and wondered why recreation has been identified as a primary purpose of the forest, especially with access so limited. She was encouraged to point out that the efficacy of recreation hinges on the ability of people to easily access the Town Forest. She pointed out that a special permit will be needed to access the park road for logging equipment, though this is not a big problem; however, using the access road for recreational groups is a bigger issue.

A couple final notes on the discussion:

- Hannah should treat the VELCO power line as its own stand - so many invasives, but VELCO treated invasives for the first time last year, so it will be interesting to see how that area changes or doesn't
- Vermont Land Trust which holds the conservation easement on the land will need to review the Management Plan once completed
- The Conservation Commission will present it to the Selectboard
- Commercial harvest funds (all or part) will go to the Edgar May Center (part of the deed restrictions)
- Other towns are using any profits from logging to deal with invasives and tree planting (they are planting trees in their town forests that will withstand a warmer climate – “assisted migration”)

Ryan urged Hannah to write the prescriptions she felt were appropriate, and we will see if we can find alternate ways to implement them, not necessarily relying on commercial logging. The management plan should focus on the long term health and resiliency of the forest.

Relicensing of the Hydroelectric Dams - Wilder, Bellows Falls and Vernon

Kathy Urffer of CRC presented a slideshow to educate us on the relicensing of the three dams just north and south of us. Towns and individuals will have a chance to comment on the relicensing and she hopes that the Conservation Commission will participate in the public comment period when it opens up.

She gave some background:

- The three dams are owned by Great River Hydro, an LLC which has been purchased by Hydro Quebec. Great River controls the river from Canada to the ocean.
- The Federal Energy Regulatory Commission (FERC) requires PM&Es – plans to protect, mitigate or enhance environmental resources – as part of the relicensing process
- The relicensing process, supposed to take 5 years, began in 2012
- 33 studies have been conducted and the CRC have been the watchdog throughout the relicensing period. The studies include white water flows, recreational assets, dragonflies, migratory and resident fish, fish ladders, riverbank erosion, bathymetry of the river, tiger beetles, mussels, etc.
- Vermont and NH (the Clean Water Act is administered by each state), US Fish and Wildlife and the Nature Conservancy are also involved in this process.
- The dams have been releasing water at peak electric use times which causes surges of water which scour the river bottom below the dam and which dramatically drop the water level 3-5' in the impoundment areas above the dams. The fluctuation is greatest at the northern ends of the impoundment areas - the case of Bellows Falls that's 29 miles - to Weathersfield, in the case of Wilder it's 46 miles to the Piermont area.

Progress so far:

- CRC has negotiated “run of river” or “inflow equals outflow” - dams will be generating electricity all the time which eliminates the scouring and dramatic drops in the impoundment areas
- The dams can still peak, but CRC negotiated total time for peaking, how much they can lower the river level (1 foot, not 3-5) and this peaking is dependent on the month and what is happening biologically with fish, mussels, etc. (Peaks and valleys are more limited)

Areas that Kathy suggests we consider when commenting on the relicensing PM&Es:

- Fish ladders are set to be upgraded in 16 years - consider urging that this happen sooner
- Recreation (for instance, upgrading the Conn River paddler trail)
- Erosion (FERC cannot require an erosion mitigation fund, but it could be asked for and if there is enough public pressure, Great River Hydro may do a settlement agreement)
- More attention to traditional cultural properties (Abenaki archaeology)
- Tributary mouths will shift once the river has a continual flow – the large deposits of sediment at tributary mouths will certainly move (somewhere).
What kind of consideration will that get? (Think for instance of Hoyt's landing)
- The CRC has already urged more comprehensive recreational mitigation – that Great River Hydro consider 175 miles of river not just a couple spots near the dams (ie adding boat launch areas, portage improvement in BF (now 1.5 mile on a road))

The States will have only 12 months to comment regarding the Clean Water Act ; they can include whatever they need in the water quality certificate - this is limited by how the state defines water quality (Vermont includes recreation, NH does not)

Rest of the Agenda

4. Minutes: The July minutes were tabled, the August minutes were moved and accepted as written.
5. Project review - Ryan had sent out current projects and urged everyone to look at the list and decide which projects to be involved in (report at the next meeting)
6. Member Packet - Ryan had created a member packet which was universally endorsed.
7. Summer walk series - we did a quick review and will deal with it more at a later meeting.
8. Town plan update - the energy section has been worked on and about to go to Selectboard. The final town plan is due for readoption 2025. We need to review the scenic, natural sections for us and comment.
9. The Town Forest kiosk was completed. Much of the materials were donated by Bibens, but Ryan and Ellen had to make some purchases.

*** Cheryl moved that Ryan Gumbart be reimbursed \$157.82 for the stain and shingles for the kiosk. Howard seconded the motion, all voted in favor.*
*** Ryan moved that Ellen Clattenburg be reimbursed for the screws and other small hardware for the kiosk. Heather seconded, all voted in favor.*
10. Budget - Cheryl pointed out that the \$179 that was taken from our budget this year should have been taken out of last year's budget. She submitted her receipt last spring, but it was lost. She has met with the

new finance person at the Town Office to fix this; that person has gone. Ryan will bring this up when he is next in the office and get it fixed.

11. Ryan suggested that we table the Rural Design discussion.

12. Ellen moved and Howard seconded her motion to adjourn at 9:13 pm.

Respectfully submitted, Ellen Clattenburg

Next meeting will be Thursday, February 22 at 7 pm.

Location TBD

AGENDA ITEM

3

CONSERVATION COMMISSION PROJECTS

Highlighting indicates changes since last meeting

Project	Supported by Town Plan section	Last Action Taken	Current Status	Next Steps
1.				
Waterway Naming Project – 2019	2.7.3, 5.3.4, 5.7.1	Ryan requested to meet with the Selectboard to discuss. Followed up 2/14.	Waiting for confirmation on Selectboard meeting.	Follow Selectboard’s guidance.
2.				
Town Forest Kiosk - 2022	2.5.5, 2.7.1, 9.5.3	Kiosk built and installed 11/17	Sitting blank in the Town Forest	Assign project leads to manage kiosk materials
3.				
Conservation Commissioner Packet - 2023		2/18 Ryan added information and compiled draft.	May still need more info and formatting. Need board’s review.	Finalize and distribute
4.				
Town Forest Management Plan - 2022	2.7.3, 4.5, 9.5.3	1/25 Hannah Dallas met with board to review goals and present map for Town Forest.	Waiting for Hannah to complete draft plan.	Review data and draft plan with Hannah.
5.				
Town Forest Interpretive Trail - 2022	2.7.1, 4.5, 9.5.3	Ellen gathered information on materials and pricing. Proposal sent to Brandon for ARPA funds.	Waiting to hear about ARPA funds. May need alternative funding.	Confirm funding or plan alternatives
6.				
Town Walk Program - 2024	2.5.5, 2.6.3.1, 2.6.3.12, 2.7.9, 5.9.3.8, 4.5, 9.5.3		Initial meeting to discuss Steve Aikenhead’s walks and Town’s Legal Trails and Class IV Roads	Assign project leads to develop schedule and other details

Future Projects:

- VOREC Grant – Town wide hiking/biking trails
- Scenic resources inventory
- Update & expand 1992 Biological Natural Areas
- Develop a supplemental forest and wildlife conservation plan per TP sec. 5.9.3
- Make info from National Register of Historic Places more accessible
- Recreational resources inventory
- Local agricultural products inventory
- Town Plan update

Grants:

- AVCC Tiny Grants – Due March 31 – \$250-\$600
- VOREC Grant – Due December 15 - \$20,000-No max
- Urban and Community Forestry Program
 - o Communities Caring for Canopy – Due January 5 - \$5,000-\$20,000 (1:1 cost-share)
 - o Growing Urban Forests EAB – Due January 5 - \$5,000-\$50,000 (1:1 cost-share)
 - o Urban & Community Forestry – Due January 5 - \$5,000-\$50,000
- Municipal Planning Grant – Due October 31 - \$30,000 (10% match)

AGENDA ITEM

6

WEATHERSFIELD CONSERVATION COMMISSION

Member Packet

GOALS

The Weathersfield Conservation Commission is a group of people willing to volunteer some of their time to help further the conservation goals detailed in the Weathersfield Town Plan. The overarching principle that guides the various Land Use boards is summarized in the first goal stated in the Land Use section of the Town Plan “*The Town shall preserve its traditional historic New England development pattern of compact, high-density, mixed-use villages separated by rural countryside.*” To this end the Conservation Commission seeks to:

- Limit the rate of development of the rural countryside by encouraging forestry and agricultural uses.
- Improve access to opportunities for active living and healthy eating by inventorying and publicizing recreational resources and local farms and products.
- Promote recreational and agricultural tourism as a major economic driver.
- Identify and advocate for significant natural, scenic, and historic resources so as to avoid adverse impacts caused by careless development.
- Conserve land and other resources critical to the long-term success of the local rural economy.

ROLE IN WEATHERSFIELD LAND USE

The Weathersfield Conservation Commission is a 9-member board of volunteers within the Town Land Use Department. The Commission is considered an advisory board to the other Land Use boards (Planning Commission and Zoning Board of Adjustment), as well as to the Selectboard on certain matters. The Commission is funded in part within the town budget as part of the Land Use Department annual budget. In 2022 the Conservation Commission budget was increased from \$500 to \$1,100 annually.

TOWN PLAN

See full text attached or at link:

https://www.weathersfieldvt.org/sites/g/files/vyhlf6216/f/uploads/weathersfieldtownplan_0.pdf

The process of writing a town plan encourages residents to visualize the future of the town, and to think about how the town is changing and whether or not the changes are in line with the overall vision. Town Plans must be readopted with or without changes every 8 years. The Weathersfield Town Plan was last adopted on May 1, 2017 so it will need to be readopted by May 1, 2025. The Planning Commission is tasked with preparing the town plan and amending it based on resident input.

The Conservation Commission plays a role as an advisory board when the Planning Commission is considering topics like Natural, Scenic, and Historic Resources; Energy; Land Use; and most other topics. While the Town Plan is largely a visionary document used to guide decisions made by town officials, it also has some regulatory power.

The Goals, Policies, and Recommendations sections are a good place to start within each chapter to get an understanding of what projects the Conservation Commission might pursue. It is also important to check if a project that the board does pursue is in agreement with the Town Plan.

ZONING BYLAWS

See full text attached or at link:

https://www.weathersfieldvt.org/sites/g/files/vyhlf6216/f/uploads/weathersfield_zoning_bylaws_-_april_5_2021_-_current_0.pdf

The Town's Zoning Bylaws contain many of the town laws that regulate how public and private land in town may be used. The Zoning Map which is part of the bylaws shows how the Planning Commission has decided to control development in town by splitting up areas of land into different use categories or zoning districts. While most districts allow for residential use (housing), industrial uses like manufacturing are only allowed in particular areas identified on the zoning map.

As the planet and human society are always changing, so too are the zoning bylaws. The Planning Commission is tasked with keeping the laws effective and relevant. The Conservation Commission collaborates with the Planning Commission on certain regulations, particularly those that concern natural, scenic, and historic resources. The Conservation Commission may advocate for or argue against the laws as they are being written.

Section 3.2 of the bylaws entitled Conservation of Natural Resources provides the Conservation Commission with some regulatory oversight. Development that is proposed to occur in or within 300 feet of a Deer Wintering Area as mapped by the State is subject to review and comments by the Conservation Commission. The Commission may hold a site visit to see the area and consult with specialists. Certain project applicants are also encouraged to consult the Conservation Commission regarding prime soils; rare, threatened, and endangered species; and mapped Biological Natural Areas.

EDUCATION & EVENTS

One of the key duties of the Conservation Commission is to keep the residents informed about issues related to natural, scenic, and historic resources. The Commission often holds public events featuring speakers with specialized knowledge in a given field. The events have been indoor presentations, outdoor talks and activities, walks on roads and trails, and any other

method of engaging people who want to learn. The Conservation Commission also participates in events hosted by other boards, such as the Parks & Rec. Commission's Children's Fishing Derby.

Past events include:

- An outdoor talk and activity about bats for children.
- A walk to learn about beavers and their impact on human infrastructure.
- A walk through historical Perkinsville Village and down a trail at the Army Corps property.
- A walk to learn about Emerald Ash Borer and its impacts.
- A presentation at the Center Meeting House about Lyme disease.
- A talk about coyotes, their ecological role and habitat.
- A gathering to weed invasive garlic mustard.

PROJECTS

In addition to the work described above, the Conservation Commission works on a variety of projects for promoting conservation in Weathersfield. The Commission also serves as the steward of the Town Forest.

Past projects include:

- A plan for the use and future of the Town Forest.
- Liz Thompson's inventory of Biological Natural Areas.
- Ash tree inventory in preparation for emerald ash borer.
- Town Forest hazardous cabin removal.
- Inventory of roads under tree canopy for protecting rural character.
- Ground water mapping for aquifer protection (collaborative with Planning Commission).

WHAT IS CONSERVATION?

The root word *conserve* means: to keep in a safe or sound state, especially, to avoid wasteful or destructive use of (Merriam-Webster). Conservation, the process of conserving, can be applied to almost anything of value. The type of conservation that the Weathersfield Conservation Commission primarily practices is land conservation. In the context of land conservation, *conservation* seeks to allow for the responsible use of the land by people and attempts to mitigate the undesirable side-effects, while *preservation* seeks to prevent human influence of the land entirely. Preservation is the theoretical polar end point of a spectrum of human land use, at the other end being something like devastation. Most things that people do with the land fall somewhere in between and likely have both generative **and** disrupting effects. Conservation is the process of evaluating the impact by the use of the land and attempting to reduce the negative impacts to the things that are valued.

One of the goals of the Weathersfield Conservation Commission is to maintain Weathersfield's traditional historic New England development pattern of high-density, mixed-use villages separated by rural countryside. Zoning restrictions can contribute to conserving this traditional development pattern or rural character, but the Conservation Commission is interested in enabling residents to find value in their land by encouraging its use for recreation, food cultivation, wood production, scenic beauty, hunting, or any use of the property that a landowner enjoys and does not result in its subdivision or loss of function.

Development pressure is the force that land conservation attempts to control. With a persistent need for more housing and the high value of land, it may be a reasonable decision to sell off excess land not being used to let someone else use it. However, there is an amount of land required for a given agricultural use, or forestry use, or habitat to be functionally sustainable. It can be expensive and, in many places, unreasonable to attempt to piece parcelized land back together to reestablish agriculture or forestry. But if the larger, continuous tracts of land are a valued resource from the beginning, for things like maple sugaring, grazing livestock, harvesting firewood, birding, mountain biking, pollinator habitat, etc., then the development that does occur may be done in a way that seeks to allow for continued responsible use of the land by people and attempts to mitigate the undesirable side-effects. Conservation is a tool to maintain, to the best of our ability, the functions of the natural world and the ability for people to continue to live in it in a somewhat traditional and sustainable, or even a beneficial way.

POLICY & PROCEDURES – PURPOSE & MISSION

- a. The Conservation Commission is organized pursuant to Title 34, Chapter 118, of the Vermont Statutes Annotated, to identify, conserve and preserve natural, scenic, and historic resources in the Town of Weathersfield.
- b. The Conservation Commission is charged with developing plans for resource protection and advising Town Officials by directing attention to the Town's Natural, Scenic, and Historic resources.
- c. The Conservation Commission administers the Weathersfield Town Forest for the primary purpose of recreation (for the enjoyment of the public and to support economic development), creation and protection of various wildlife and plant habitats, and the education of the public on forest management.

STATUTORY AUTHORITY

Title 24 : Municipal And County Government

Chapter 118 : Conservation Commissions

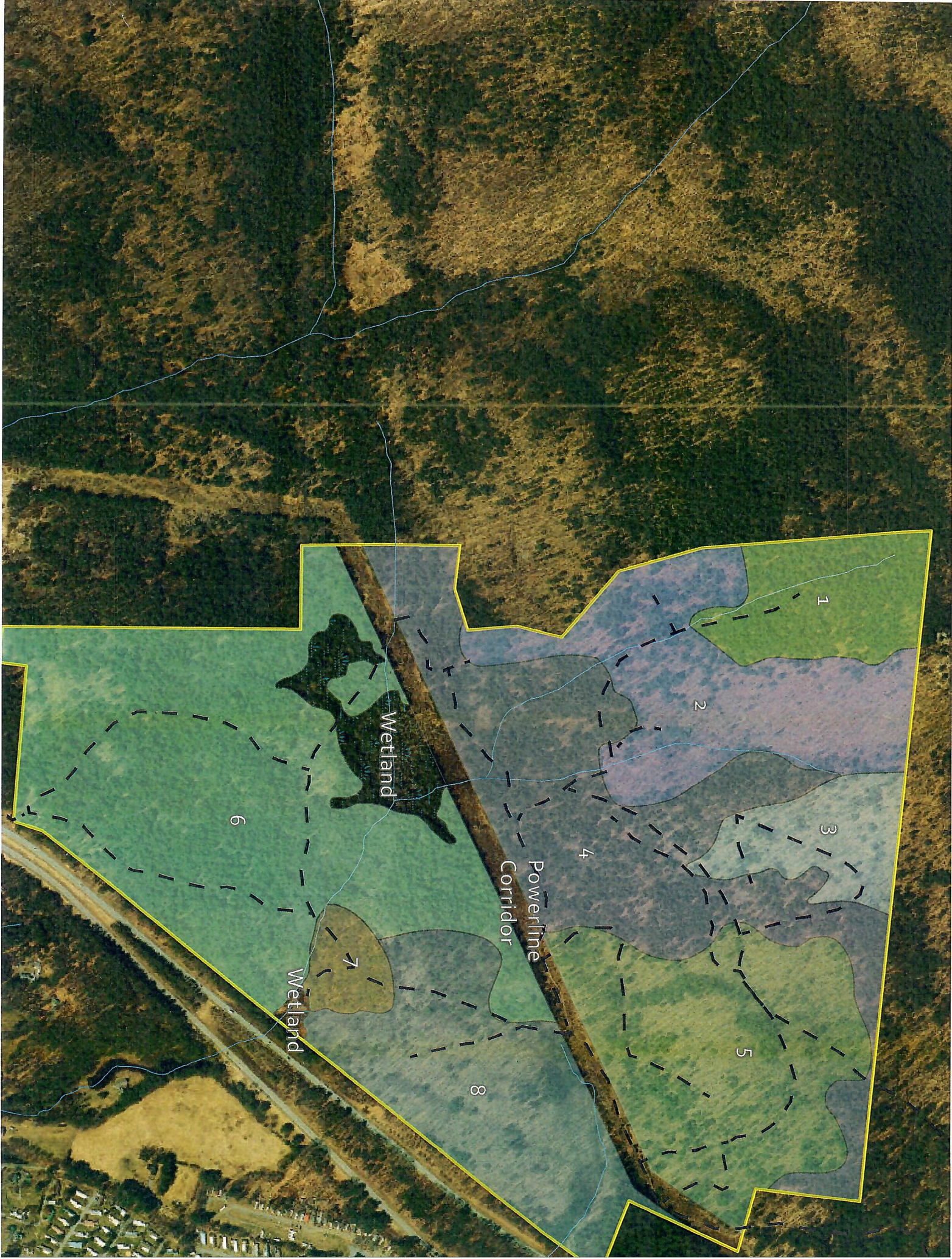
See full text attached or at link: <https://legislature.vermont.gov/statutes/chapter/24/118>

ATTACHMENTS

- 2021 Weathersfield Conservation Commission Policy and Procedures
- Vermont Statutes Annotated, Title 34, Chapter 118
- 2017 Weathersfield Town Plan
- 2021 Weathersfield Zoning Bylaws
- Letterhead

AGENDA ITEM

7



1

2

3

4

5

6

7

8

Wetland

Wetland

Powerline
Corridor

AGENDA ITEM

9



Ryan Gumbart <ryangumbart@gmail.com>

future walks

Ellen Clattenburg <ellen.clattenburg@gmail.com>

Wed, Nov 15, 2023 at 6:16 PM

To: Cheryl Cox <ctc@tds.net>, ryan gumbart <ryangumbart@gmail.com>, Heather Shand <hshand@gmail.com>, Howard Beach <mhowardbeach@gmail.com>, Anna Vogell <annasdogservices@gmail.com>, Marina Garland <mgarland@coa.edu>

As you probably know, Steve Aikenhead ran about 10-11 walks in the summers (not all in Weathersfield). He did not have the energy to do this in 2023.

So that I am not the only keeper of this information, here are the walks he has traditionally done (he would love to see the walks continue and share the responsibilities):

1. The lower valley from Stoughton Pond to Springweather
2. Cathedral Rocks
3. Branch Brook area (to marker, to cemetery, varies)
4. from the Meetinghouse to Steve's cabin
5. B-29 crash site, steep hike over private property
6. Ferry Road (Carol Orth has helped on this one)
7. Cooks Pond - down and back or the whole loop from Meetinghouse
8. Mt. Ascutney
9. Little Ascutney
10. The ancient hemlocks (off of Little Canada Rd)
11. Crown Point Rd from Reservoir Rd

Steve says many of these need maintenance. He would like to lead at least one next summer. He said Ken Poland has helped with maintenance (as has Bill Jenzen and Carol Orth).

I wrote Ryan that we could take these over, discuss with the historical society and Parks and Rec, add to the list, share leadership and maintenance, and publicity.

this is for future planning.

Ellen

AGENDA ITEM

10

FY24 LAND USE BUDGET / ACTUALS Q1

Account	Description	FY24 Budget	July Actual	August Actual	September Actual	YTD	REM	%
REVENUES								
11-6-105	Land Use							
	Tax Revenue	44,944	3,745	3,745	3,745	11,236	33,708	25%
11-6-105-01.00	Land Use-Zoning Permits	6,122	811	1,284	398	2,493	3,629	41%
11-6-105-01.25	Land Use-Zoning By-Laws	-	-	-	-	-	-	
11-6-105-01.50	Land Use- Fines & Penalt	-	-	-	-	-	-	
11-6-105-02.00	Land Use Change Tax	-	-	-	-	-	-	
	Total Revenue	51,066	4,556	5,029	4,144	13,729	37,337	27%
EXPENDITURES								
11-7-105	Land Use							
11-7-105-10.10	Land Use-Admin. Salary	-	-	-	-	-	-	
11-7-105-10.11	Land Use- Special Pr	-	-	-	-	-	-	
11-7-105-10.55	Land Use-Recording Secre	2,837	451	180	-	631	2,206	22%
11-7-105-10.90	Temp. Zoning Asst.	-	-	-	-	-	-	
11-7-105-11.00	Land Use-FICA	-	21	-	-	21	(21)	
11-7-105-13.00	Land Use-Retirement	-	-	-	-	-	-	
11-7-105-14.10	Land Use-Insurance Benef	-	-	-	-	-	-	
11-7-105-14.90	Insurance Optout	-	-	-	-	-	-	
11-7-105-16.00	Land Use-Workmen's Compt	-	-	-	-	-	-	
11-7-105-17.00	Land Use-Unemployment	-	-	-	-	-	-	
11-7-105-20.00	Land Use-Supplies	200	-	-	20	20	180	10%
11-7-105-21.00	Postage	-	-	9	5	15	(15)	
11-7-105-23.00	Printing	150	-	-	-	-	150	0%
11-7-105-23.50	Land Use Advertising	1,500	27	88	-	115	1,385	8%
11-7-105-24.00	Equipment	-	-	-	-	-	-	
11-7-105-25.00	Land Use-Consultant	34,200	1,566	1,034	-	2,600	31,600	8%
11-7-105-25.05	IT Services	1,462	-	123	122	245	1,217	17%
11-7-105-27.00	Memberships and Conferen	500	-	-	-	-	500	0%
11-7-105-29.00	Expense Reimbursement	-	-	-	-	-	-	
11-7-105-31.00	Telephone Cell Phone	-	-	-	-	-	-	
11-7-105-38.10	Zoning Bylaws	-	-	-	-	-	-	
11-7-105-38.50	Conservation Commission	1,100	-	-	179	179	921	16%
11-7-105-42.00	Regional Planning Dues	3,531	-	3,695	-	3,695	(164)	105%
11-7-105-42.50	Dues and Subscriptions	100	-	-	-	-	100	0%
11-7-105-43.00	Legal Expense	4,486	827	115	-	941	3,545	21%
11-7-105-43.20	Legal Expense - ZBA	-	-	-	-	-	-	
11-7-105-43.40	Legal Expense - Planning	-	-	-	-	-	-	
11-7-105-43.60	Legal Expense - Enforcem	-	-	-	-	-	-	
11-7-105-44.50	Plan and Bylaw Developme	-	-	-	-	-	-	
11-7-105-45.10	NEMRC Services	-	-	-	-	-	-	
11-7-105-45.50	Land Use Maps	1,000	-	-	-	-	1,000	0%
11-7-105-99.00	Miscellaneous Expenses	-	-	-	-	-	-	
	Total Expense	51,066	2,891	5,244	326	8,461	42,605	17%
	Net Revenue/Expense	-	1,665	(215)	3,817	5,268		

BLANK

RE: reimbursement request

ctc@tds.net <ctc@tds.net>

Tue 2/6/2024 3:22 PM

To: Steve Hier <Treasurer@weathersfield.org>; Brandon Gulnick <Townmanager@weathersfield.org>

Cc: Sierra Buccellato <SBuccellato@weathersfield.org>; Land Use <Landuse@weathersfield.org>

Thank you, Steve, and anyone else involved.

From: Steve Hier <Treasurer@weathersfield.org>

Sent: Tuesday, February 6, 2024 10:12 AM

To: ctc@tds.net; Brandon Gulnick <Townmanager@weathersfield.org>

Cc: Sierra Buccellato <SBuccellato@weathersfield.org>; Land Use <Landuse@weathersfield.org>

Subject: Re: reimbursement request

As the elected Treasurer, that is not my call. That would be the decision of the Town Manager.

Brandon - you will have to look through this email thread to catch up on this item.

I can comment on some ways to address this however:

1. Move the expense to FY23 - Not possible as previously explained.
2. Charge another account in FY24 - As a legitimate CC expense it should be posted to this account and not another account.
3. Increase the CC budget by \$ 170 - There is currently no formal process for adjusting budgeted amounts. However, it has been done on some occasions. Since we cannot exceed the voted budget, another budget line would have to be reduced in order to increase this line. FYI, there were two budgeting errors in the special appropriations this year which, combined, created an excess of \$ 335 in that department.
4. Allow the CC to exceed their budget by up to \$ 170 as necessary - A decision the Town Manager could make in my opinion.
5. Take the expense from the CC reserve fund - That reserve fund has \$ 1,822 in it. It was established by the voters for the purpose of "land stewardship, inventorying the natural resources of the Town of Weathersfield, encouraging educational activities for public understanding of local natural resources and conservation needs, and cooperating with other municipal groups for these and other purposes such as promoting local economy". If this expense fits into that definition, the CC can recommend to the Select Board that they move that expense to the CC reserve fund.

Steve

From: ctc@tds.net <ctc@tds.net>

Sent: Friday, February 2, 2024 12:59 PM

To: Steve Hier <Treasurer@weathersfield.org>; Land Use <Landuse@weathersfield.org>

Cc: Sierra Buccellato <SBuccellato@weathersfield.org>

Subject: RE: reimbursement request

Hello Steve ~ I am requesting that you credit the CC with \$170 for this year's budget (24FY) and I will donate the remaining \$9 to the CC (which I plan to do anyway). After all, the submission was timely and the mistake(s) were made by the Town's department. Thank you for your consideration. Cheryl Cox

From: Steve Hier <Treasurer@weathersfield.org>
Sent: Thursday, February 1, 2024 11:07 AM
To: Land Use <Landuse@weathersfield.org>
Cc: Bruce Cox - Weathersfield Planning Commission (ctc@tds.net) <ctc@tds.net>; Sierra Buccellato <SBuccellato@weathersfield.org>
Subject: Re: reimbursement request

Looks like the ball was dropped on this in a couple of ways. Looks like the payment request got lost somehow and the check was not issued until September. Also looks like the reimbursement was authorized to be up to \$ 170 and not the total \$ 179.

Unfortunately, not much can be done at this point. It is too late to move the payment back into FY23. Those books are closed with the final audit forthcoming shortly.

There have been issues such as these over the past few years as we have cycled through some staff turnover. I would strongly suggest that any and all expenditures of funds be communicated directly with Sierra Buccellato, our new Accountant. If she knows what is in the works then I have confidence that expenditures will be handled appropriately and in a timely manner.

Thanks

Steve

From: Land Use <Landuse@weathersfield.org>
Sent: Wednesday, January 31, 2024 8:28 AM
To: Steve Hier <Treasurer@weathersfield.org>
Cc: Bruce Cox - Weathersfield Planning Commission (ctc@tds.net) <ctc@tds.net>
Subject: Fw: reimbursement request

Hi Steve,

Below is a message from Cheryl Cox on the Conservation Commission. She noticed that a Conservation Commission expense was out of place. The board voted to spend the \$179 to reimburse Cheryl to use the money prior to the end of FY23. All this was done and submitted prior to the end of the year. It appears there was a mistake, and the money was recognized in the FY24 budget.

Please let me know if this was a mistake or if I am misunderstanding. If it is an error, what would be the process to have this rectified so as to not use up our limited budget?

Thanks,
Ryan

From: ctc@tds.net <ctc@tds.net>
Sent: Sunday, January 28, 2024 2:09 PM
To: Land Use <Landuse@weathersfield.org>
Subject: FW: reimbursement request

Hi Ryan ~ Below is the receipt with a date of May 26 on the email. Attached are the minutes approving the reimbursement. I asked for \$170, but was paid the full \$179.